



Intensive development efforts have produced this range of cleats that provide unbeatable holding power, yet are designed for easy cleating and releasing of control lines in every application and load condition. Through the use of advanced composites, these cleats achieve superior performance while overcoming the limitations of metal alloys. Ronstan cam cleats are strong, light and corrosion free.

The unique tooth profile and cam geometry are designed to grip without damaging the rope. A multi-coil spring recessed in the upper part of the cam generates near constant torque. This constant torque ensures secure cleating of even the smallest lines with minimal abrasion or rope wear and low line entry and exit efforts.

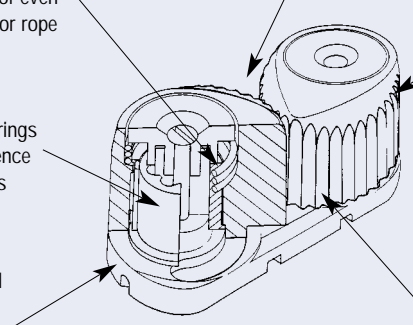
MATERIALS

- ▶ Carbon fibre composite cams (C-Cleats)
- ▶ Reinforced composite cams (T-Cleats)
- ▶ Long strand fibre reinforced polymer base
- ▶ Teflon® impregnated Acetal slotted bearing
- ▶ Stainless Steel multi-coil spring

PRODUCT No.	COLOUR	SIZE	HOLE SPACING		ROPE CAPACITY		MWL		BL		WEIGHT	
			mm	(in.)	mm	(in.)	kg	(lb)	kg	(lb)	g	(oz)
C-Cleat												
RF5000	Grey	Sml	27	(1 1/16)	2-8	(3/32-5/16)	120	(260)	240	(530)	20	(0.7)
RF5000P	Pink	Sml	27	(1 1/16)	2-8	(3/32-5/16)	120	(260)	240	(530)	20	(0.7)
RF5000Y	Yellow	Sml	27	(1 1/16)	2-8	(3/32-5/16)	120	(260)	240	(530)	20	(0.7)
RF5000B	Blue	Sml	27	(1 1/16)	2-8	(3/32-5/16)	120	(260)	240	(530)	20	(0.7)
RF5010	Grey	Med	38	(1 1/2)	3-12	(1/8-1/2)	180	(400)	360	(790)	50	(1.8)
RF5010P	Pink	Med	38	(1 1/2)	3-12	(1/8-1/2)	180	(400)	360	(790)	50	(1.8)
RF5010Y	Yellow	Med	38	(1 1/2)	3-12	(1/8-1/2)	180	(400)	360	(790)	50	(1.8)
RF5010B	Blue	Med	38	(1 1/2)	3-12	(1/8-1/2)	180	(400)	360	(790)	50	(1.8)
RF5020	Grey	Lge	51	(2)	6-16	(1/4-5/8)	230	(510)	460	(1010)	110	(3.9)
RF5020P	Pink	Lge	51	(2)	6-16	(1/4-5/8)	230	(510)	460	(1010)	110	(3.9)
RF5020Y	Yellow	Lge	51	(2)	6-16	(1/4-5/8)	230	(510)	460	(1010)	110	(3.9)
RF5020B	Blue	Lge	51	(2)	6-16	(1/4-5/8)	230	(510)	460	(1010)	110	(3.9)



- ▶ The multi-coil spring recessed in the upper part of the cam generates near constant torque. This constant torque ensures secure cleating of even the smallest lines with minimal abrasion or rope wear and low line entry and exit efforts.
- ▶ Self lubricating, self-cleaning slotted bearings provide lower frictional resistance and hence quicker response times than ball bearings which deform under load.
- ▶ Base produced from long fibre reinforced polymer, a result of advanced composite technology providing metal replacement performance without any of the usual trade-offs such as corrosion and weight.



- ▶ Low entry and exit efforts due to unique teeth and entry profiles. Reversible cams (patented).
- ▶ **T-Cleat**
Lightweight hi-tech composite cams are corrosion free and long wearing.
- ▶ **C-Cleat**
Lightweight ultra rigid carbon fibre composite cams are corrosion free, suffer virtually no tooth wear and are non-rope abrasive.
- ▶ CAD-CAM Computer optimised Cam profile results in superior gripping ability over a wide range of rope sizes.

AUST. PATENT NO. 611037. U.S. PATENT NO. 4956897

Materials have been carefully selected to ensure optimum performance and dependability, season after season. 'T-Cleat' cams are made from tough, fibre reinforced composite. Carbon fibre composite is used for 'C-Cleat' cams to provide maximum resistance to heat and abrasion.

KEY POINTS

- ▶ High strength
- ▶ Superior holding power
- ▶ Light weight
- ▶ Corrosion resistant
- ▶ Self lubricating, self-cleaning bearings
- ▶ Low line entry effort, easy to release

A unique self lubricating, self-cleaning bearing system delivers consistent high performance even when subjected to high static loads that can lead to deformation and failure of conventional ball bearings. The self-cleaning properties also make the bearings more resistant to sand and salt.

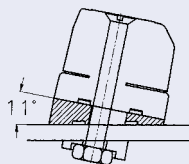
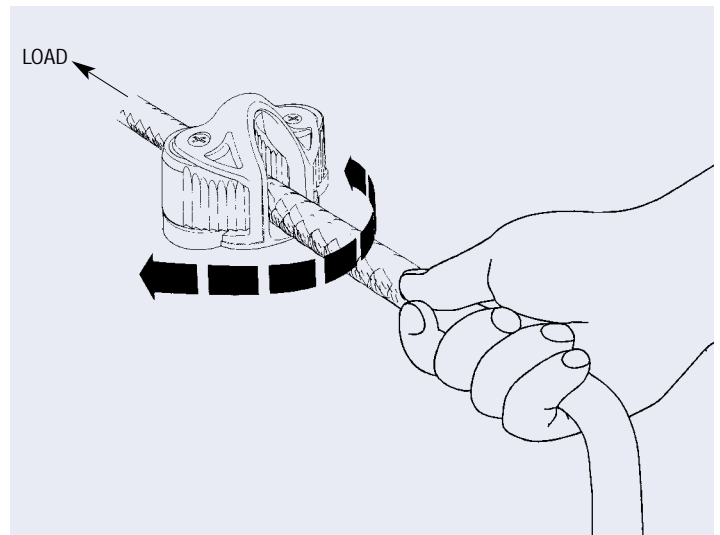
FASTENER SIZE

- ▶ Small M4 (3/16")
- ▶ Medium M5 (3/16")
- ▶ Large M6 (1/4")

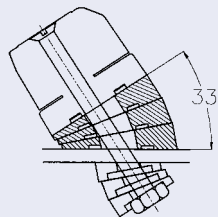
DIMENSIONS

- ▶ Small 48L x 24W x 20Hmm (1 7/8"L x 1"W x 3/4"H)
- ▶ Medium 66L x 31W x 26Hmm (2 5/8"L x 1 1/4"W x 1"H)
- ▶ Large 88L x 41W x 35Hmm (3 1/2"L x 1 5/8"W x 1 3/8"H)

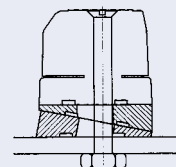
PRODUCT No.	COLOUR	SIZE	HOLE SPACING		ROPE CAPACITY		MWL		BL		WEIGHT	
			mm	(in.)	mm	(in.)	kg	(lb)	kg	(lb)	g	(oz)
T-Cleat												
RF5001	Red	Sml	27	(1 1/16)	2-8	(3/32-5/16)	120	(260)	240	(530)	20	(0.7)
RF5001P	Pink	Sml	27	(1 1/16)	2-8	(3/32-5/16)	120	(260)	240	(530)	20	(0.7)
RF5001Y	Yellow	Sml	27	(1 1/16)	2-8	(3/32-5/16)	120	(260)	240	(530)	20	(0.7)
RF5011	Red	Med	38	(1 1/2)	3-12	(1/8-1/2)	180	(400)	360	(790)	50	(1.75)
RF5011P	Pink	Med	38	(1 1/2)	3-12	(1/8-1/2)	180	(400)	360	(790)	50	(1.75)
RF5011Y	Yellow	Med	38	(1 1/2)	3-12	(1/8-1/2)	180	(400)	360	(790)	50	(1.75)



► Under deck nut keeper ensures load is evenly distributed to deck.



► Stack up to 3 wedges.



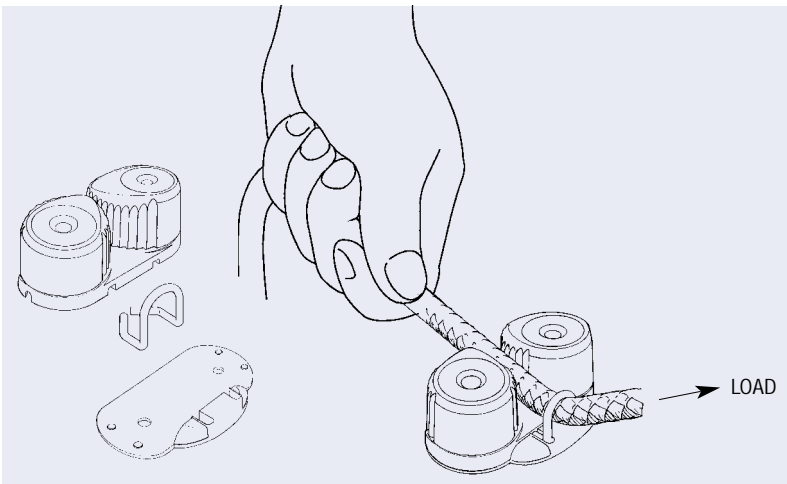
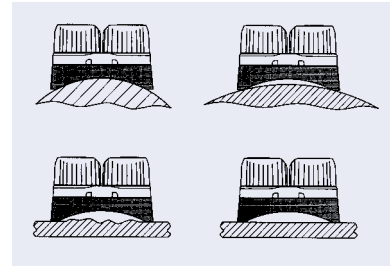
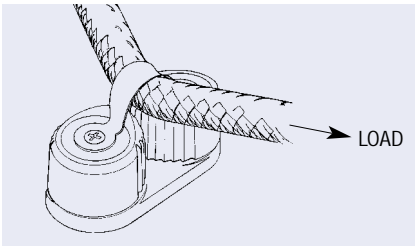
► Cleats can be raised by reverse stacking any even number of wedges.

The patented 'Fast Track' fairlead is a separate, one-piece accessory that is easily fitted to the 'T-Cleat' and 'C-Cleat'. Offering fast, precise cleating and release from any lead angle and lower entry efforts

for off-centre cleating, the 'Fast Track' fairlead is made from tough, abrasion resistant composite material. The compact, low profile design will not catch lines or clothing.

Wedge kits are used in some applications to provide correct alignment, and can be stacked in opposite directions to create a parallel riser. The backing plate distributes loads evenly under the deck.

PRODUCT No.	DESCRIPTION	WEIGHT	
		g	(oz)
'Fast Track' Fairleads			
RF5005	Front mounted fairlead, suits small C-Cleat and T-Cleat, grey	7	(0.2)
RF5015	Front mounted fairlead, suits medium C-Cleat and T-Cleat, grey	14	(0.5)
Wedge Kits			
RF5002	Wedge kit, suits small C-Cleat and T-Cleat	5	(0.2)
RF5012	Wedge kit, suits medium C-Cleat and T-Cleat	11	(0.4)



The Rope Guide is a load side mounted fairlead that ensures correct alignment of control lines in to the cleat.

The Stainless Steel loop is held firmly between the cleat base and the gasket pad to protect the deck.

Stainless Steel saddles are available for all three sizes of cam cleats. They are used to keep the uncleated line within close proximity to the cleat, facilitating recleating.

PRODUCT No.	DESCRIPTION	WEIGHT	
		g	(oz)
Rope Guides			
RF5004	Rope guide, suits small C-Cleat and T-Cleat	5	(0.2)
RF5014	Rope guide, suits medium C-Cleat and T-Cleat	10	(0.4)
Saddles			
RF5003	Saddle, flared top, suits small C-Cleat and T-Cleat	4	(0.1)
RF5013	Saddle, flared top, suits medium C-Cleat and T-Cleat	8	(0.3)
RF5023	Saddle, flared top, suits large C-Cleat	15	(0.5)
Riser/Curved Surface Adapter			
RF5016	Riser/Curved surface adapter, suits medium C-Cleat and T-Cleat	30	(1.1)