

PRODUCT No.	DESCRIPTION	A		B		C		D		E		WEIGHT	
		mm	(in.)	mm	(in.)	mm	(in.)	mm	(in.)	mm	(in.)	g	(oz)
RC00010	Headboard plates (pair)	188	(7 13/32)	119	(4 11/16)	23	(29/32)	-	-	-	-	173	(6.1)
RC00020	Bush, suits 13mm (1/2") webbing	-	-	-	-	-	-	-	-	-	-	1	(0.1)
RC11960	Headboard car	171	(6 3/4)	26	(1 1/32)	65	(2 9/16)	11.5	(7/16)	47	(27/32)	315	(11.1)
RC11963	Intermediate car	48	(29/32)	26	(1 1/32)	36	(13/32)	18.0	(23/32)	47	(27/32)	59	(2.1)
RC11965	Track slide, Acetal	37	(15/32)	26	(1 1/32)	36	(13/32)	17.5	(11/16)	38	(1 1/2)	30	(1.1)
RC11966	Batten car	66	(19/32)	26	(1 1/32)	36	(13/32)	-	-	47	(27/32)	80	(2.8)
RC11969	Quick release batten car	88	(15/32)	26	(1 1/32)	36	(13/32)	-	-	47	(27/32)	150	(5.3)



RC00150  
RC00140



RC00251  
RC00241



RC00153  
RC00142



RC001R3



RC00112



RC002R2



RC00210

**FEATURES**

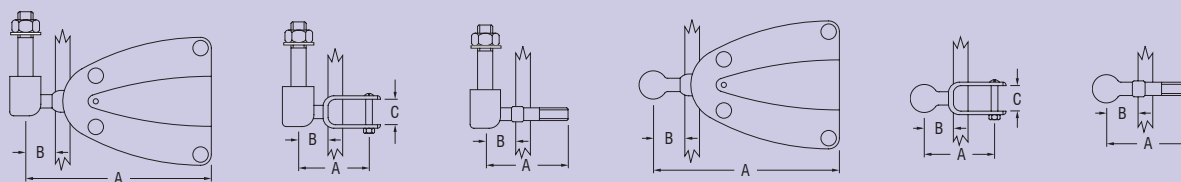
- ▶ Low profile cars run on twin races of Torlon® ball bearings.
- ▶ Machined alloy end caps ensure precision bearing performance and durability.
- ▶ Intermediate cars come with quick-release pins. Bushes can be permanently sewn into webbing loops on mainsail luff.
- ▶ Batten receptacles suit round or flat battens.
- ▶ Stainless steel ball joint links provide movement in all directions and up to 105 degrees either side of centre - also available to suit other common types of batten receptacle.
- ▶ Quick-Release batten receptacle links allow quick and easy removal of the mainsail for changeover, repair or stowage.
- ▶ Easy track installation using patented slug connectors.

**APPLICATIONS**

- ▶ Monohulls to 14m (46') or sail area 44m<sup>2</sup> (474 ft<sup>2</sup>).
- ▶ Multihulls to 11m (36') or sail area 37m<sup>2</sup> (398 ft<sup>2</sup>).
- ▶ Refer to schematic diagrams for assistance in specifying system requirements.

**MATERIALS**

- ▶ Alloy car bodies and end caps.
- ▶ Torlon® ball bearings.
- ▶ Grade 316 stainless steel receptacle links.
- ▶ Batten receptacles in tough, moulded Nylon.



PRODUCT No.	DESCRIPTION	A		B		C		WEIGHT	
		mm	(in.)	mm	(in.)	mm	(in.)	g	(oz)
RC00112	Batten receptacle link with M10 thread	48	(1 29/32)	19	(3/4)	-	-	71	(2.5)
RC00140	Batten receptacle, Nylon, suits 40mm (1 9/16") flat or 14mm (9/16") round battens	-	-	-	-	-	-	61	(2.2)
RC00142	Batten receptacle link with RC00140 receptacle	94	(3 23/32)	17	(21/32)	-	-	122	(4.3)
RC00150	Batten receptacle, Nylon, suits 50mm (1 31/32") flat or 18mm (23/32") round battens	-	-	-	-	-	-	115	(4.1)
RC00153	Batten receptacle link with RC00150 receptacle	114	(4 1/2)	17	(21/32)	-	-	188	(6.6)
RC001R3	Batten receptacle link to suit Rutgerson receptacle	34	(1 11/32)	15	(19/32)	15	(19/32)	66	(2.3)
RC00210	Quick release batten receptacle link with M10 thread	48	(1 29/32)	19	(3/4)	-	-	31	(1.1)
RC00241	Quick release batten receptacle link with RC00140 receptacle	94	(3 23/32)	17	(21/32)	-	-	82	(2.9)
RC00251	Quick release batten receptacle link with RC00150 receptacle	114	(4 1/2)	17	(21/32)	-	-	147	(5.2)
RC002R2	Quick release batten receptacle link to suit Rutgerson receptacle	34	(1 11/32)	15	(19/32)	15	(19/32)	25	(0.9)



RC1191-2.0  
RC1191-3.0  
RC1191-6.0  
RC1199-0.2



RC1191J



RC11981



RC11980



RC00310



RC00312



RC00314



RC00315



RC00316



RC00320



RC00321



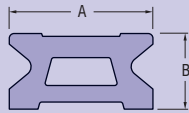
RC00322



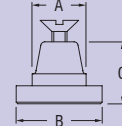
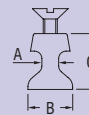
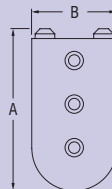
RC00323



RC00328



RC1191 actual size



PRODUCT No.	DESCRIPTION	A		B		C		WEIGHT	
		mm	(in.)	mm	(in.)	mm	(in.)	g	(oz)
RC00310	Track mounting slug, including fasteners	3.7	(5/32)	9.4	(3/8)	13.5	(17/32)	4	(0.1)
RC00312	Track mounting slug, including fasteners	2.8	(1/8)	7.6	(5/16)	12.6	(1/2)	3	(0.1)
RC00314	Track mounting slug, including fasteners	4.0	(5/32)	12.0	(15/32)	16.1	(5/8)	5	(0.2)
RC00315	Track mounting slug, including fasteners	4.6	(3/16)	12.8	(1/2)	16.0	(5/8)	5	(0.2)
RC00316	Track mounting slug, including fasteners	3.6	(5/32)	11.5	(7/16)	15.0	(19/32)	5	(0.2)
RC00320	Track mounting slug, including fasteners	10.0	(13/32)	18.0	(23/32)	12.6	(1/2)	7	(0.2)
RC00321	Track mounting slug, including fasteners	11.8	(15/32)	19.9	(25/32)	13.0	(1/2)	8	(0.3)
RC00322	Track mounting slug, including fasteners	11.8	(15/32)	20.0	(25/32)	13.0	(1/2)	9	(0.3)
RC00323	Track mounting slug, including fasteners	8.1	(5/16)	15.0	(19/32)	13.5	(17/32)	6	(0.2)
RC00328	Track mounting slug, including fasteners	8.0	(5/16)	15.0	(19/32)	12.0	(15/32)	5	(0.2)
RC1191-2.0*	Track, 1975mm (77 13/16") long, black	19	(3/4)	10.4	(13/32)	-	-	614	(21.7)
RC1191-3.0*	Track, 3025mm (119 3/16") long, black	19	(3/4)	10.4	(13/32)	-	-	932	(32.9)
RC1191-6.0*	Track, 6025mm (237 3/8") long, black	19	(3/4)	10.4	(13/32)	-	-	1862	(65.7)
RC1191J	Track joiner, Acetal	-	-	-	-	-	-	3	(0.1)
RC11980	End cap, plastic	30	(1 13/16)	26	(1 1/32)	-	-	6	(0.2)
RC11981	End stop, plastic	70	(2 3/4)	38	(1 1/2)	-	-	15	(0.5)
RC1199-0.2*	Gate track, 250mm (9 27/32") long, black	19	(3/4)	10.4	(13/32)	-	-	81	(2.9)

\* Silver track available - Order as RCxxxxxxS