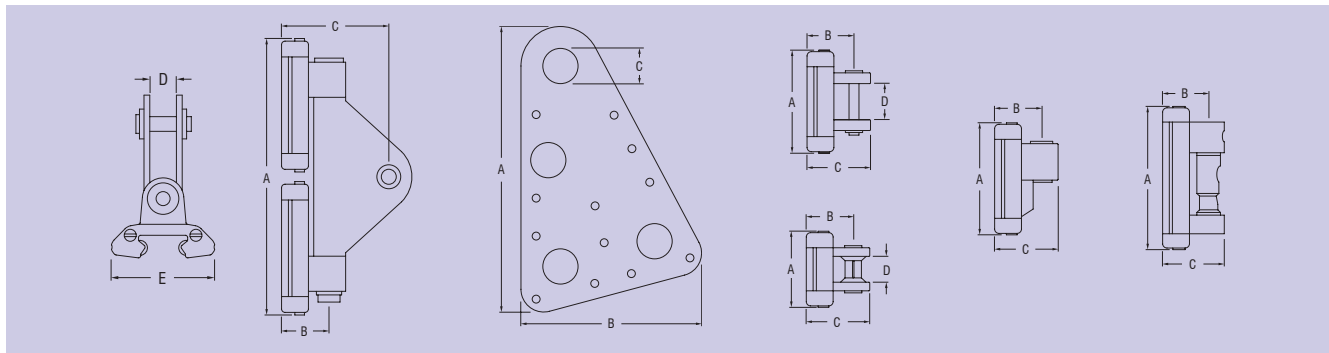


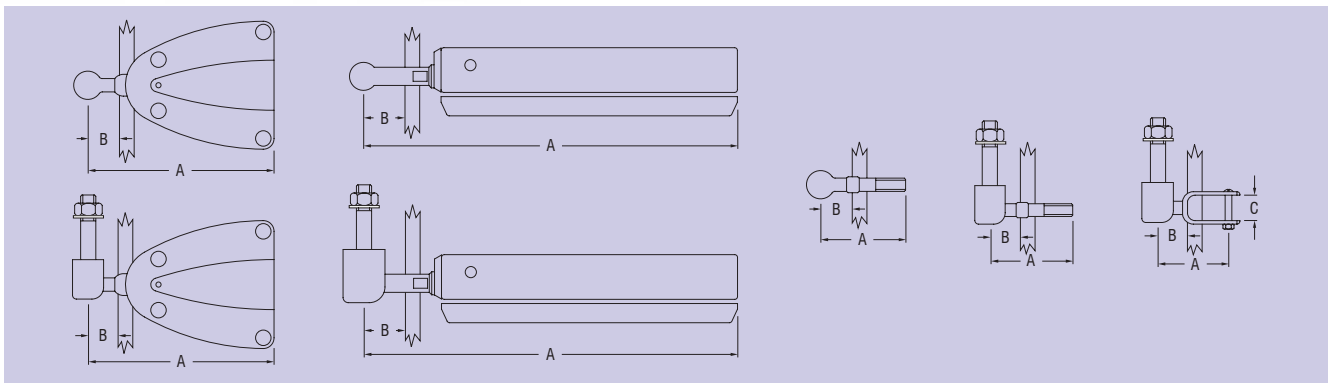


FEATURES

- ▶ Low profile cars run on twin races of Teflon® ball bearings, with machined alloy end caps for bearing performance and durability.
- ▶ Intermediate cars come with quick-release pins. Bushes can be permanently sewn into webbing loops on mainsail luff.
- ▶ Stainless steel ball joint links provide movement in all directions and up to 105 degrees either side of centre - also available to suit other common types of batten receptacle.
- ▶ Luff Groove track available.
- ▶ Quick-Release batten receptacle links allow quick and easy removal of the mainsail for changeover, repair or stowage.
- ▶ Easy track installation using patented slug connectors.



PRODUCT No.	DESCRIPTION	A		B		C		D		E		WEIGHT	
		mm	(in.)	mm	(in.)	mm	(in.)	mm	(in.)	mm	(in.)	g	(oz)
RC00010	Headboard plates (pair)	188	(7 13/32)	119	(4 11/16)	23	(29/32)	-	-	-	-	173	(6.1)
RC00021	Bush, suits 13mm (1/2") webbing	-	-	-	-	-	-	-	-	-	-	1	(0.1)
RC12260	Headboard car	206	(8 1/8)	33	(1 5/16)	78	(3 1/16)	17	(21/32)	57.5	(2 1/4)	584	(20.6)
RC12263	Intermediate car	64	(2 17/32)	33	(1 5/16)	45	(1 25/32)	18	(23/32)	57.5	(2 1/4)	110	(3.9)
RC12266	Batten car	77	(3 1/32)	33	(1 5/16)	45	(1 25/32)	-	-	57.5	(2 1/4)	155	(5.5)
RC12269	Quick release batten car	120	(4 23/32)	33	(1 5/16)	45	(1 25/32)	-	-	57.5	(2 1/4)	360	(12.7)
RC12272	Reef car	130	(5 1/8)	33	(1 5/16)	45	(1 25/32)	32	(1 1/4)	57.5	(2 1/4)	350	(12.3)



PRODUCT No.	DESCRIPTION	A		B		C		WEIGHT	
		mm	(in.)	mm	(in.)	mm	(in.)	g	(oz)
RC00111	Batten receptacle link with M10 thread	62	(2 7/16)	19	(3/4)	-	-	75	(2.6)
RC00140	Batten receptacle, Nylon, suits 40mm (1 9/16") flat & 14mm (9/16") round battens	-	-	-	-	-	-	61	(2.2)
RC00143	Batten receptacle link with RC00140 receptacle	96	(3 25/32)	19	(3/4)	-	-	116	(4.1)
RC00150	Batten receptacle, Nylon, suits 50mm (1 31/32") flat & 18mm (23/32") round battens	-	-	-	-	-	-	115	(4.1)
RC00152	Batten receptacle link with RC00150 receptacle	116	(4 13/32)	19	(3/4)	-	-	190	(6.7)
RC00160	Batten receptacle, alloy, adjustable, suits 20mm (25/32") round battens	-	-	-	-	-	-	261	(9.2)
RC00160L	Batten leech receptacle, alloy, adjustable, suits 20mm (25/32") round battens	-	-	-	-	-	-	285	(10.1)
RC00161	Batten receptacle link with RC00160 receptacle	206	(8 1/8)	19	(3/4)	-	-	375	(13.2)
RC001R2	Batten receptacle link to suit Rutgerson receptacle	37	(1 15/32)	19	(3/4)	15	(19/32)	69	(2.4)
RC00212	Quick release batten receptacle link with M10 thread	62	(2 7/16)	19	(3/4)	-	-	49	(1.7)
RC00253	Quick release batten receptacle link with RC00150 receptacle	116	(4 9/16)	19	(3/4)	-	-	165	(5.8)
RC00262	Quick release batten receptacle link with RC00160 receptacle	206	(8 1/8)	19	(3/4)	-	-	332	(11.7)



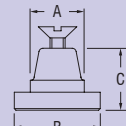
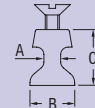
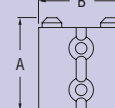
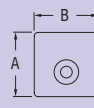
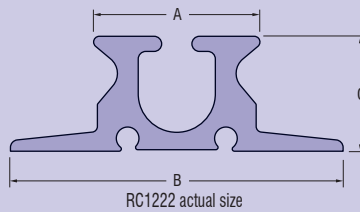
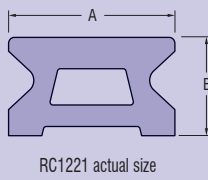
APPLICATIONS

- ▶ Monohulls to 18m (60') or sail area 58m² (624 ft²).
- ▶ Multihulls to 12m (40') or sail area 46m² (495 ft²).

- ▶ Refer to schematic diagrams for assistance in specifying system requirements.

MATERIALS

- ▶ Alloy car bodies and end caps.
- ▶ Torlon® ball bearings.
- ▶ Grade 316 stainless steel receptacle links.
- ▶ Batten receptacles in tough, moulded Nylon.



PRODUCT No.	DESCRIPTION	A		B		C		WEIGHT	
		mm	(in.)	mm	(in.)	mm	(in.)	g	(oz)
RC00332	Track mounting slug, including fasteners	3.5	(1/8)	8.3	(5/16)	16.1	(5/8)	5	(0.2)
RC00333	Track mounting slug, including fasteners	4.6	(3/16)	13.0	(1/2)	18.0	(23/32)	6	(0.2)
RC00334	Track mounting slug, including fasteners	4.5	(3/16)	11.9	(15/32)	16.6	(21/32)	6	(0.2)
RC00335	Track mounting slug, including fasteners	4.5	(3/16)	11.9	(15/32)	16.6	(21/32)	6	(0.2)
RC00340	Track mounting slug, including fasteners	10.0	(13/32)	18.0	(23/32)	15.0	(19/32)	8	(0.3)
RC00341	Track mounting slug, including fasteners	13.6	(17/32)	21.5	(27/32)	15.5	(5/8)	11	(0.4)
RC00343	Track mounting slug, including fasteners	11.8	(15/32)	19.8	(25/32)	15.5	(5/8)	10	(0.4)
RC1221-2.0*	Track, 2025mm (79 25/32") long, black	22	(7/8)	13	(1/2)	-	-	956	(33.7)
RC1221-3.0*	Track, 3025mm (119 3/16") long, black	22	(7/8)	13	(1/2)	-	-	1453	(51.2)
RC1221-6.0*	Track, 6025mm (237 3/8") long, black	22	(7/8)	13	(1/2)	-	-	2880	(101.6)
RC1221J	Track joiner, Acetal	-	-	-	-	-	-	4	(0.1)
RC1222-2.0*	Luff groove track, 2025mm (79 25/32") long, black	22	(7/8)	44	(1 23/32)	15	(19/32)	1185	(41.8)
RC1222-3.0*	Luff groove track, 3025mm (119 3/16") long, black	22	(7/8)	44	(1 23/32)	15	(19/32)	1770	(62.4)
RC1222-6.0*	Luff groove track, 6025mm (237 3/8") long, black	22	(7/8)	44	(1 23/32)	15	(19/32)	3525	(124.3)
RC1222J	Luff groove track joiner	-	-	-	-	-	-	2	(0.1)
RC12280	End cap, plastic	30	(1 3/16)	27	(1 1/16)	-	-	7	(0.2)
RC12281	End stop, alloy	48	(1 29/32)	47	(1 27/32)	-	-	53	(1.9)
RC1229-0.3*	Gate track, 325mm (12 13/16") long, black	22	(7/8)	13	(1/2)	-	-	156	(5.5)
RC1229-0.3L*	Luff groove gate track, 325mm (12 13/16") long, black	22	(7/8)	44	(1 23/32)	15	(19/32)	190	(6.7)

* Silver track available - Order as RCxxxxxxxS