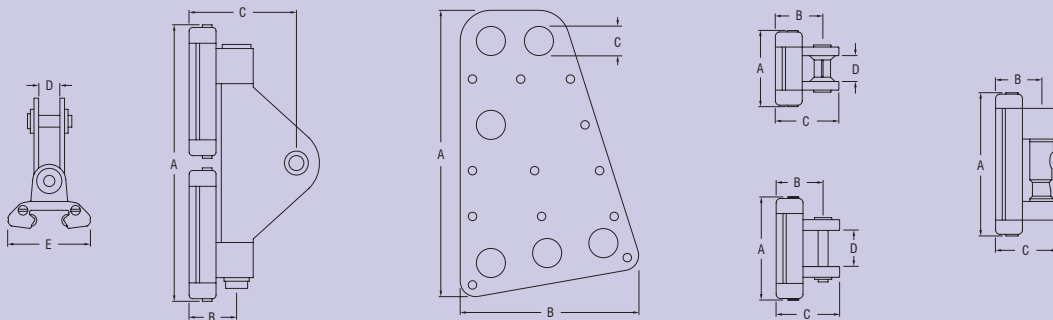


FEATURES

- ▶ Low profile cars run on twin races of Torlon® ball bearings, for performance and durability.
- ▶ Quick-Release batten receptacle cars and links are standard, to allow quick and easy removal of the mainsail for changeover, repair or stowage.
- ▶ Stainless steel ball joint links provide movement in all directions and up to 105 degrees either side of centre, and are also available to suit other common types of batten receptacle.
- ▶ Luff Groove track available.
- ▶ Adjustable alloy batten receptacles are available in two sizes.
- ▶ Minimum distance from mast to mainsail luff enhances mainsail efficiency.
- ▶ Easy track installation using patented slug connectors.



PRODUCT No.	DESCRIPTION	A		B		C		D		E		WEIGHT	
		mm	(in.)	mm	(in.)	mm	(in.)	mm	(in.)	mm	(in.)	g	(oz)
RC00011	Headboard plates (pair)	280	(11 1/32)	175	(6 29/32)	28	(1 3/32)	-	-	-	-	540	(19.0)
RC00012	Headboard plates (pair)	280	(11 1/32)	175	(6 29/32)	23	(29/32)	-	-	-	-	540	(19.0)
RC00022	Bush, suits 13mm (1/2") webbing	-	-	-	-	-	-	-	-	-	-	1	(0.1)
RC12660	Headboard car	225	(8 7/8)	36	(1 13/32)	99	(3 29/32)	16	(5/8)	69	(2 23/32)	977	(34.5)
RC12663	Intermediate car	70	(2 3/4)	36	(1 13/32)	48	(1 29/32)	18	(23/32)	69	(2 23/32)	167	(5.9)
RC12669	Quick release batten car	100	(3 15/16)	36	(1 13/32)	48	(1 29/32)	-	-	69	(2 23/32)	385	(13.6)
RC12672	Reef car	90	(3 17/32)	36	(1 13/32)	48	(1 29/32)	28	(1 3/32)	69	(2 23/32)	285	(10.1)



RC00150



RC00253



RC00160
RC00160L



RC00262



RC00212
RC00213



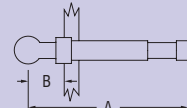
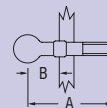
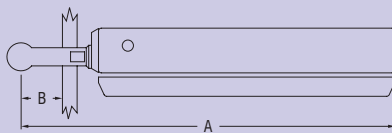
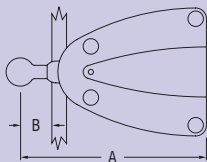
RC002B1

APPLICATIONS

- ▶ Monohulls to 20m (65') or sail area 85m² (915 ft²).
- ▶ Multihulls to 14m (46') or sail area 65m² (700 ft²).
- ▶ Refer to schematic diagrams for assistance in specifying system requirements.

MATERIALS

- ▶ Alloy car bodies.
- ▶ Torlon® ball bearings.
- ▶ Grade 316 stainless steel receptacle links.
- ▶ Alloy or moulded Nylon batten receptacles.



PRODUCT No.	DESCRIPTION	A		B		WEIGHT	
		mm	(in.)	mm	(in.)	g	(oz)
RC00150	Batten receptacle, Nylon, suits 50mm (1 31/32") flat & 18mm (23/32") round	-	-	-	-	115	(4.1)
RC00160	Batten receptacle, alloy, adjustable, suits 20mm (25/32") round	-	-	-	-	261	(9.2)
RC00160L	Batten leech receptacle, alloy, adjustable, suits 20mm (25/32") round battens	-	-	-	-	285	(10.1)
RC00212	Quick release batten receptacle link with M10 thread	62	(2 7/16)	19	(3/4)	49	(1.7)
RC00213	Quick release batten receptacle link with M12 thread	62	(2 7/16)	19	(3/4)	59	(2.1)
RC00253	Quick release batten receptacle link with RC00150 receptacle	116	(4 9/16)	19	(3/4)	165	(5.8)
RC00262	Quick release batten receptacle link with RC00160 receptacle	206	(8 1/8)	19	(3/4)	332	(11.7)
RC002B1	Quick release batten receptacle link to suit Bainbridge receptacle	80	(3 5/32)	19	(3/4)	53	(1.9)



RC1261-2.0
RC1261-3.0
RC1261-6.0
RC1268-1.5
RC1269-0.3

RC1262-2.0
RC1262-3.0
RC1262-6.0
RC1269-0.3L

RC1261J

RC1262J

RC12681

RC12680

RC00332

RC00333

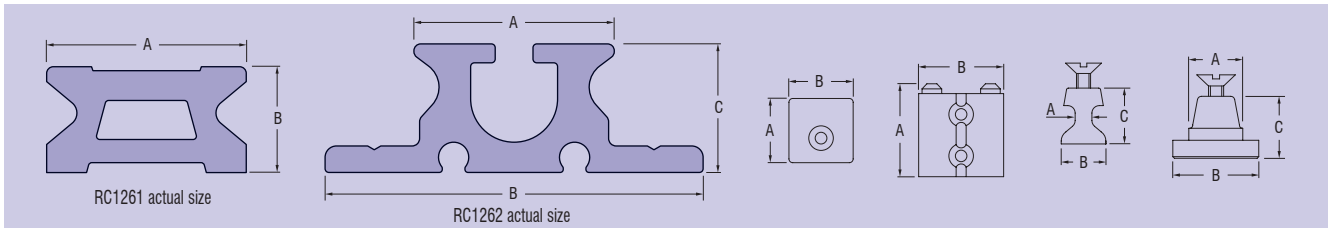
RC00334

RC00335

RC00340

RC00341

RC00343



PRODUCT No.	DESCRIPTION	A		B		C		WEIGHT	
		mm	(in.)	mm	(in.)	mm	(in.)	g	(oz)
RC00332	Track mounting slug, including fasteners	3.5	(1/8)	8.3	(5/16)	16.1	(5/8)	5	(0.2)
RC00333	Track mounting slug, including fasteners	4.6	(3/16)	13.0	(1/2)	18.0	(23/32)	6	(0.2)
RC00334	Track mounting slug, including fasteners	4.5	(3/16)	11.9	(15/32)	16.6	(21/32)	6	(0.2)
RC00335	Track mounting slug, including fasteners	4.5	(3/16)	11.9	(15/32)	16.6	(21/32)	6	(0.2)
RC00340	Track mounting slug, including fasteners	10.0	(13/32)	18.0	(23/32)	15.0	(19/32)	8	(0.3)
RC00341	Track mounting slug, including fasteners	13.6	(17/32)	21.5	(27/32)	15.5	(5/8)	11	(0.4)
RC00343	Track mounting slug, including fasteners	11.8	(15/32)	19.8	(25/32)	15.5	(5/8)	10	(0.4)
RC1261-2.0*	Track, 1975 mm (77 13/16") long, black	26.4	(1 1/32)	13.5	(17/32)	-	-	1190	(42.0)
RC1261-3.0*	Track, 3025 mm (119 3/16") long, black	26.4	(1 1/32)	13.5	(17/32)	-	-	1780	(62.8)
RC1261-6.0*	Track, 6025 mm (237 3/8") long, black	26.4	(1 1/32)	13.5	(17/32)	-	-	3550	(125.2)
RC1261J	Track joiner, Acetal	-	-	-	-	-	-	5	(0.2)
RC1262-2.0*	Luff groove track, 2025 mm (79 25/32") long, black	26.4	(1 1/32)	50	(1 31/32)	17	(21/32)	1825	(64.4)
RC1262-3.0*	Luff groove track, 3025 mm (119 3/16") long, black	26.4	(1 1/32)	50	(1 31/32)	17	(21/32)	2725	(96.1)
RC1262-6.0*	Luff groove track, 6025 mm (237 3/8") long, black	26.4	(1 1/32)	50	(1 31/32)	17	(21/32)	5430	(191.5)
RC1262J	Luff groove track joiner	-	-	-	-	-	-	4	(0.1)
RC12680	End cap, plastic	34	(1 11/32)	32	(1 1/4)	-	-	7	(0.2)
RC12681	End stop, alloy	55	(2 5/32)	45	(1 25/32)	-	-	73	(2.6)
RC1268-1.5*	Headboard car track, 1500mm (59 3/32) long, black	26.4	(1 1/32)	13.5	(17/32)	-	-	831	(29.3)
RC1269-0.3*	Gate track, 325mm (12 13/16") long, black	26.4	(1 1/32)	13.5	(17/32)	-	-	196	(6.9)
RC1269-0.3L*	Luff track groove gate, 325mm (12 13/16") long, black	26.4	(1 1/32)	50	(1 31/32)	17	(21/32)	290	(10.2)

* Silver track available - Order as RCxxxxxxS