

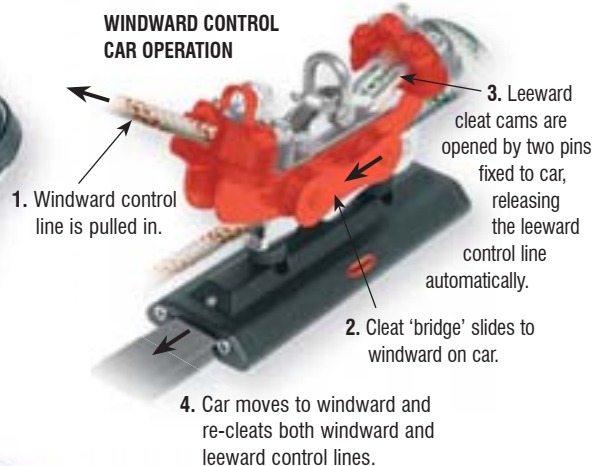




FEATURES

- ▶ Low profile, lightweight alloy cars and end caps.
- ▶ Loop and fork style fittings are easily added for becket and control line block attachment.
- ▶ Compact sheave arrangements for neat, low profile control line purchase systems. Control sheaves are 30mm (1 3/16") diameter and suit up to 6mm (1/4") rope.
- ▶ Twin rows of recirculating Torlon® ball bearings provide smooth, low friction performance for easy adjustment under load.

PRODUCT No.	DESCRIPTION	LENGTH mm (in.)	WIDTH mm (in.)	M.W.L. kg (lb)	B.L. kg (lb)	WEIGHT g (oz)
 Ball Bearing						
RC12203	Car, pivoting shackle top, 2 mounting screws	75 (3)	58 (2 5/16)	500 (1100)	1490 (3280)	145 (5.1)
RC12204	Car, pivoting shackle top, 2 mounting screws	125 (5)	58 (2 5/16)	880 (1940)	2640 (5820)	230 (8.1)
RC12210	Car, saddle top, single control sheaves	125 (5)	58 (2 5/16)	880 (1940)	2180 (4810)	250 (8.8)
RC12211	Car, saddle top, double control sheaves	125 (5)	58 (2 5/16)	880 (1940)	2180 (4810)	300 (10.6)
RC12220	Car, saddle top, single control sheaves, 2 cleats	125 (5)	58 (2 5/16)	880 (1940)	2000 (4410)	635 (22.4)
RC12221	Car, saddle top, single control sheaves, 4 cleats	125 (5)	58 (2 5/16)	880 (1940)	2000 (4410)	655 (23.1)
 Accessories						
RF1051	Control becket, 8mm (5/16") eye, suits RC12203 & RC12204	-	-	-	-	6 (0.2)
RF1053	Control becket fork, 5mm (3/16") pin, suits RC12203 & RC12204	-	14 (9/16)	-	-	9 (0.3)


RC12227

RC12213

RC12223

RF324-1
FEATURES

- ▶ Individual cleat supports can be adjusted to optimum cleating angle.
- ▶ RC12227 windward control car automatically releases leeward traveller control line when pulling car to windward, then re-cleats for easy control through tacks. Control line sheaves suit 4:1 or 5:1 purchase system.

- ▶ Stand-up spring kit RF324-1 is available to suit mainsheet cars RC12213, RC12223. Combine with a mainsheet system RF72700 or RF72900 for ultimate mainsheet control.

APPLICATIONS

- ▶ Mainsheet systems on boats to 10m (33 ft).

MATERIALS

- ▶ Alloy track, car bodies and end caps.
- ▶ Torklon® ball bearings in cars and control sheaves.
- ▶ Acetal sheaves (all purpose), alloy ball bearing sheaves.
- ▶ Grade 316 stainless steel fixtures.

PRODUCT No.	DESCRIPTION	LENGTH		WIDTH		M.W.L.		B.L.		WEIGHT	
		mm	(in.)	mm	(in.)	kg	(lb)	kg	(lb)	g	(oz)
Ball Bearing											
RC12213	Car, pivoting shackle top, double control sheaves	180	(7 1/16)	58	(2 5/16)	880	(1940)	2180	(4810)	520	(18.3)
RC12223	Car, pivoting shackle top, double control sheaves, adjustable cleats	180	(7 1/16)	58	(2 5/16)	880	(1940)	2180	(4810)	930	(32.8)
RC12227	Windward control car, pivoting top, triple control sheaves & cleats	175	(6 7/8)	58	(2 5/16)	880	(1940)	2180	(4810)	1056	(37.2)
Accessories											
RF324-1	Stand up spring kit, suits RC12213, RC12223	-	-	-	-	-	-	-	-	60	(2.1)



FEATURES




- ▶ Ball bearing cars have twin rows of recirculating Torlon® ball bearings for smooth adjustment under load.
- ▶ Sliderod cars are a simple option for a sheet lead that does not require adjustment under load. Plunger stop can be locked in the “up” position.
- ▶ Genoa car sheaves are of either 50mm (2”) or 60mm (2 3/8”) diameter. They are wide enough to accept two sheets for easy headsail changes.
- ▶ Roller ball bearing sheave upgrade suits both ball bearing and Sliderod cars with 60mm (2 3/8”) sheaves.
- ▶ Extra purchase for lead adjustment systems can easily be added by fitting becket or block addition kits (supplied with mounting screws).
- ▶ RC52239 sheet deflector pivots to 45 degrees from vertical, and is bolted to aft end of track to lead sheet to a winch mounted on a cockpit coaming or above the track level.

APPLICATIONS

- ▶ Genoa sheet systems on boats to 11m (36ft).

MATERIALS

- ▶ Alloy track, car bodies and end caps.
- ▶ Torlon® ball bearings in cars and control sheaves.
- ▶ Acetal primary sheaves (genoa cars)
- ▶ Alloy control sheaves and primary sheave upgrade.
- ▶ Grade 316 stainless steel fixtures.

PRODUCT No.	DESCRIPTION	LENGTH		WIDTH		M.W.L.		B.L.		WEIGHT	
		mm	(in.)	mm	(in.)	kg	(lb)	kg	(lb)	g	(oz)
 Ball Bearing											
RC12230	Genoa car, control becket	130	(5 1/8)	58	(2 5/16)	880	(1940)	2410	(5310)	389	(13.7)
RC12231	Genoa car, single control sheave	165	(6 1/2)	58	(2 5/16)	990	(2180)	2300	(5070)	570	(20.1)
 Sliderod											
RC52230	Genoa car, sliderods, plunger stop	125	(5)	45	(1 3/4)	1205	(2660)	2410	(5310)	520	(18.3)
RC52231	Genoa car, sliderods, internal control becket & becket return	125	(5)	45	(1 3/4)	1205	(2660)	2410	(5310)	499	(17.6)
 Accessories											
RC00411	Control sheave addition kit, suits RC12231	65	(2 9/16)	40	(1 9/16)	240	(530)	900	(1980)	47	(1.7)
RC00412	Control becket, 8mm (5/16”) eye, 2 x M6 screws, suits RC12203 & RC12204	-	-	-	-	-	-	-	-	6	(0.2)
RC52239	End stop sheet deflector	95	(3 3/4)	45	(1 3/4)	860	(1900)	2000	(4410)	330	(11.6)
RF68000W	Sheave RB, aluminium, diameter 60mm (2 3/8”), suits RC12231, RC52230, RC52231	-	-	33	(1 5/16)	1150	(2540)	-	-	128	(4.5)


FEATURES

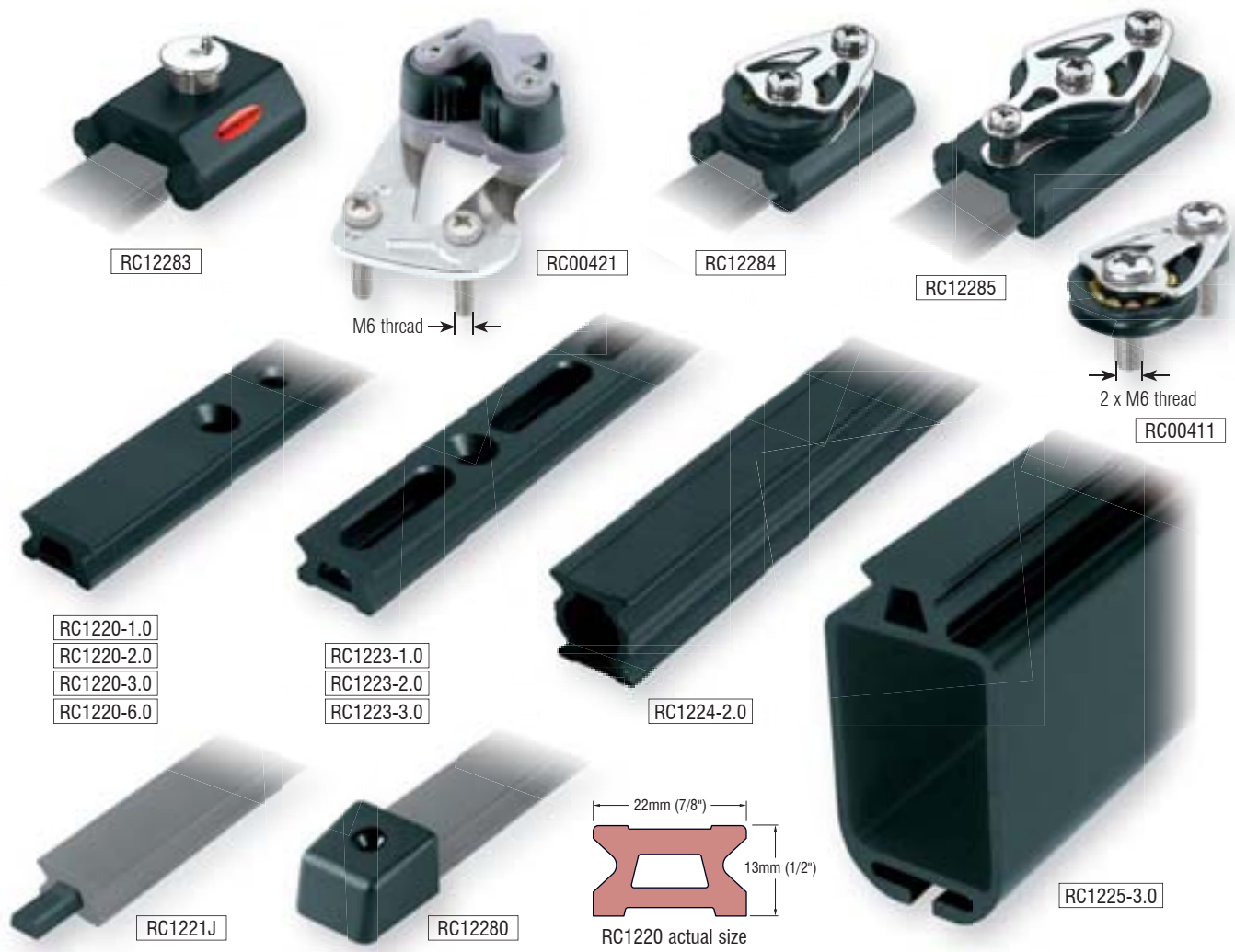
- ▶ Sliderod cars with pivoting shackles suit a variety of applications where a secure, adjustable take-off point for a block or control line is required. Plunger stops can be locked in the "up" position.

- ▶ Sliderod spinnaker pole cars suit poles set up for end-for-end jibes. Adjustment is by plunger stop, or by control line secured within the milled slot at the end of the car (RC52242).
- ▶ Ball bearing spinnaker pole car suits piston style inboard end fittings with 32mm toggle.

APPLICATIONS

- ▶ Spinnaker pole systems on boats to 10m (33 ft).
- ▶ Outhaul car for boats to 8m (26 ft).

PRODUCT No.	DESCRIPTION	LENGTH		WIDTH		M.W.L.		B.L.		WEIGHT	
		mm	(in.)	mm	(in.)	kg	(lb)	kg	(lb)	g	(oz)
BB Ball Bearing											
RC12244	Spinnaker pole car, suits 32mm (1 1/4") toggle	130	(5 1/8)	58	(2 5/16)	1350	(2980)	2700	(5950)	308	(10.9)
SR Sliderod											
RC00461	Sliderods, suits 48mm car (pair)	37	(1 7/16)	6.4	(1/4)	-	-	-	-	4	(0.1)
RC00462	Sliderods, suits 85mm car (pair)	74	(2 15/16)	6.4	(1/4)	-	-	-	-	8	(0.3)
RC00463	Sliderods, suits 115mm car (pair)	104	(4 1/8)	6.4	(1/4)	-	-	-	-	11	(0.4)
RC00464	Sliderods, suits 105mm car (pair)	94	(3 11/16)	6.4	(1/4)	-	-	-	-	10	(0.4)
RC00465	Sliderods, suits 125mm car (pair)	114	(4 1/2)	6.4	(1/4)	-	-	-	-	12	(0.4)
RC52202	Car, sliderods, pivoting shackle top	48	(1 7/8)	45	(1 3/4)	600	(1320)	1490	(3280)	95	(3.4)
RC52203	Car, sliderods, pivoting shackle top, internal control beackets	85	(3 3/8)	45	(1 3/4)	1000	(2200)	2690	(5930)	166	(5.9)
RC52240	Car, sliderods, pivoting shackle top & plunger stop	85	(3 3/8)	45	(1 3/4)	975	(2150)	1940	(4280)	177	(6.2)
RC52241	Outhaul car, sliderods, 8mm (5/16") pin, internal control beackets	115	(4 1/2)	45	(1 3/4)	1205	(2660)	2410	(5310)	347	(12.2)
RC52242	Spinnaker pole car, sliderods, ring, internal control beackets	105	(4 1/8)	45	(1 3/4)	1300	(2870)	2800	(6170)	385	(13.6)
RC52243	Spinnaker pole car, sliderods, ring, plunger stop	105	(4 1/8)	45	(1 3/4)	1300	(2870)	2500	(5510)	410	(14.5)



- FEATURES**
- ▶ Adjustable stops can be fitted on track aft of genoa cars and used to relieve load on adjustment tackle.
 - ▶ Control ends with high performance Tordon® ball bearing alloy sheaves are used with mainsheet traveller and genoa sheeting systems to create purchase systems for easy adjustment of car position under load.
 - ▶ Control end sheaves are 40mm (1 9/16") diameter and suit up to 8mm (5/16") rope.
 - ▶ Cleat kits include mounting screws and are easily fitted to control ends – supports can be adjusted to optimum cleating angle.
 - ▶ High profile and beam track can be used for unsupported spans to bridge cockpits and companionway hatches.
 - ▶ Light weight track has milled slots between mounting holes, achieving significant weight reduction.
 - ▶ Standard low profile track has stop holes for cars fitted with plunger stops.
- APPLICATIONS**
- ▶ Mainsheet systems on boats to 10m (33 ft).
 - ▶ Genoa sheet systems on boats to 11m (36 ft).

▶ **TRACK FASTENINGS** – 6mm (1/4") countersunk fasteners at 100mm (3 15/16") centres ▶ **STOP HOLES** – 50mm (1 31/32") centres

PRODUCT No.	DESCRIPTION	LENGTH		WIDTH		M.W.L.		B.L.		WEIGHT	
		mm	(in.)	mm	(in.)	kg	(lb)	kg	(lb)	g	(oz)
RC00411	Control sheave addition kit, suits RC12284, RC12285	65	(2 9/16)	40	(1 9/16)	240	(530)	900	(1980)	47	(1.7)
RC00421	Control end cleat addition kit, suits RC12284, RC12285	-	-	-	-	-	-	-	-	207	(7.3)
RC1220-1.0*	Track, black	996	(39 1/4)	22	(7/8)	-	-	-	-	460	(16.2)
RC1220-2.0*	Track, black	1996	(78 5/8)	22	(7/8)	-	-	-	-	920	(32.4)
RC1220-3.0*	Track, black	2996	(118)	22	(7/8)	-	-	-	-	1380	(48.7)
RC1220-6.0*	Track, black	5996	(236 1/4)	22	(7/8)	-	-	-	-	2760	(97.3)
RC1221J	Track joiner	60	(2 3/8)	-	-	-	-	-	-	4	(0.1)
RC1223-1.0	Light weight track, black	996	(39 1/4)	22	(7/8)	-	-	-	-	388	(13.7)
RC1223-2.0	Light weight track, black	1996	(78 5/8)	22	(7/8)	-	-	-	-	765	(27.0)
RC1223-3.0	Light weight track, black	2996	(118)	22	(7/8)	-	-	-	-	1138	(40.1)
RC1224-2.0	High profile track, black	1996	(78 5/8)	22	(7/8)	-	-	-	-	1360	(48.0)
RC1225-3.0	Beam track, black	2996	(118)	85	(3 3/8)	-	-	-	-	6240	(220.1)
RC12280	End cap, plastic	30	(1 3/16)	26	(1)	-	-	-	-	6	(0.2)
RC12283	Adjustable stop	60	(2 3/8)	45	(1 3/4)	-	-	-	-	104	(3.7)
RC12284	Control end, single sheave	75	(3)	45	(1 3/4)	240	(530)	900	(1980)	140	(4.9)
RC12285	Control end, single sheave & becket	96	(3 25/32)	45	(1 3/4)	320	(710)	900	(1980)	168	(5.9)

* Silver track available - Order as RCxxxxxS



Converted O60 *Grundig* - 2003 Sydney to Mooloolaba race.
Photo: Peter Campbell
Offshore Magazine

