



RC13003



RF324-2



RC13004



RC13012





RC13023



RC13013

FEATURES

- ▶ Low profile, lightweight alloy cars and end caps.
- ▶ Twin rows of recirculating Torlon® ball bearings provide smooth, low friction performance for easy adjustment under load.
- ▶ Individual cleat supports can be adjusted to optimum cleating angle.
- ▶ Loop and fork style fittings suit becket or control line blocks to add extra purchase to control line systems.
- ▶ Control line sheaves are 50mm (2") diameter and suit up to 8mm (5/16") rope.
- ▶ Stand-up spring kit RF324-2 is available to suit mainsheet cars RC13004, RC13012, RC13013, RC13023. Combine with a Roller Ball block or Orbit block™ from Series 60, 75 or 100 to complete the mainsheet system.

PRODUCT No.	DESCRIPTION	LENGTH		WIDTH		M.W.L.		B.L.		WEIGHT	
		mm	(in.)	mm	(in.)	kg	(lb)	kg	(lb)	g	(oz)
 Ball Bearing											
RC13003	Car, pivoting shackle top, 2 mounting screws	100	(3 1/16)	77	(3 1/16)	860	(1900)	2800	(6170)	350	(12.3)
RC13004	Car, pivoting shackle top, 2 mounting screws	150	(5 7/8)	77	(3 1/16)	1650	(3640)	3300	(7280)	525	(18.5)
RC13012	Car, pivoting shackle top, single control sheaves	225	(8 7/8)	77	(3 1/16)	2450	(5400)	4400	(9700)	915	(32.3)
RC13013	Car, pivoting shackle top, double control sheaves	225	(8 7/8)	77	(3 1/16)	2450	(5400)	4400	(9700)	1070	(37.7)
RC13023	Car, pivoting shackle top, double control sheaves, adjustable cleats	225	(8 7/8)	77	(3 1/16)	2450	(5400)	4400	(9700)	1500	(52.9)
 Accessories											
RF1051	Control becket, 8mm (5/16") eye, suits RC13003 & RC13004	-	-	-	-	-	-	-	-	6	(0.2)
RF1053	Control becket fork, 5mm (3/16") pin, suits RC13003 & RC13004	-	-	14	(9/16)	-	-	-	-	9	(0.3)
RF324-2	Stand-up spring kit, suits RC13004, RC13012, RC13013, RC13023	-	-	-	-	-	-	-	-	60	(2.1)

WINDWARD CONTROL CAR OPERATION

1. Windward control line is pulled in.
2. Cleat 'bridge' slides to windward on car.
3. Leeward cleat cams are opened by two pins fixed to car, releasing the leeward control line automatically.
4. Car moves to windward and re-cleats both windward and leeward control lines.


FEATURES

- ▶ RC13027 car automatically releases leeward traveller control line when pulling car to windward, then re-cleats for easy control through tacks. Control line sheaves suit 4:1 or 5:1 purchase system.
- ▶ RC13018 and RC13019 with integral pivoting mainsheet sheave units are a compact and low profile solution for 2:1 mainsheet systems.

- ▶ Control line sheaves are 60mm (2 3/8") diameter and suit up to 14mm (9/16") rope.

APPLICATIONS

- ▶ Mainsheet systems on boats to 17m (56 ft).
- ▶ Self tacking jib sheet systems on boats to 11m (36 ft).

MATERIALS

- ▶ Alloy track, car bodies and end caps.
- ▶ Torlon® ball bearings in cars and control sheaves.
- ▶ Alloy control and mainsheet sheaves.
- ▶ Grade 316 stainless steel fixtures.

PRODUCT No.	DESCRIPTION	LENGTH		WIDTH		M.W.L.		B.L.		WEIGHT	
		mm	(in.)	mm	(in.)	kg	(lb)	kg	(lb)	g	(oz)
Ball Bearing											
RC13018	Car, 2 x 75mm (3") main sheaves, single control sheaves	300	(11 13/16)	77	(3 1/16)	2900	(6390)	5800	(12790)	2950	(104.0)
RC13019	Car, 2 x 100mm (4") main sheaves, single control sheaves	375	(14 3/4)	77	(3 1/16)	4000	(8820)	8000	(17640)	4300	(151.7)
RC13027	Windward control car, pivoting top, triple control sheaves & cleats	230	(9 1/16)	77	(3 1/16)	2200	(4850)	4400	(9700)	1720	(60.7)



RC13030



RC13031





RC13032



RC13033

FEATURES

- ▶ Ball bearing cars have twin rows of recirculating Torton® ball bearings for smooth adjustment under load.
- ▶ Genoa cars pivot to 45 degrees from vertical for optimum alignment with sheet load.
- ▶ Genoa car sheaves are 75mm (3") diameter and accept two sheets for easy headsail changes.
- ▶ Roller ball bearing sheave upgrade suits both ball bearing and Sliderod cars.
- ▶ Cars with control sheaves can be matched with track control ends to create compact, low friction purchase systems for adjustment under load.
- ▶ Control line sheaves are 50mm (2") diameter and suit up to 8mm (5/16") rope.

PRODUCT No.	DESCRIPTION	LENGTH		WIDTH		M.W.L.		B.L.		WEIGHT	
		mm	(in.)	mm	(in.)	kg	(lb)	kg	(lb)	g	(oz)
 Ball Bearing											
RC13030	Genoa car, control becket	165	(6 1/2)	77	(3 1/16)	1320	(2910)	2400	(5290)	885	(31.2)
RC13031	Genoa car, single control sheave	200	(7 7/8)	77	(3 1/16)	1800	(3970)	3200	(7050)	1130	(39.9)
RC13032	Genoa car, single control sheave & becket	225	(8 7/8)	77	(3 1/16)	1800	(3970)	3200	(7050)	1192	(42.0)
RC13033	Genoa car, double control sheaves	200	(7 7/8)	77	(3 1/16)	1800	(3970)	3200	(7050)	1227	(43.3)
 Accessories											
RF78000W	Sheave RB, aluminium, diameter 75mm (3"), suits RC13030, RC13031, RC13032, RC13033	-	-	42	(1 5/16)	2400	(5290)	-	-	280	(9.9)



Correct RC53039 End stop sheet deflector alignment

FEATURES

- ▶ RC13034A ball bearing high load genoa car has alloy roller ball bearing primary and control sheaves.
- ▶ Sliderod cars are a simple option for a sheet lead that does not require adjustment under load. Plunger stop can be locked in the "up" position (RC53030), or a control line can be secured in the milled slot (RC53031).

- ▶ RC53039 sheet deflector pivots to 45 degrees from vertical, and is bolted to aft end of track to lead sheet to a winch mounted on a cockpit coaming or above the track level.

APPLICATIONS

- ▶ Genoa sheet systems on boats to 17m (56 ft).

MATERIALS

- ▶ Alloy track, car bodies and end caps.
- ▶ Torlon® ball bearings in cars and control sheaves.
- ▶ Acetal slide rods.
- ▶ Acetal primary sheaves (genoa cars)
- ▶ Alloy control sheaves and primary sheave upgrade.
- ▶ Grade 316 stainless steel fixtures.


PRODUCT No.	DESCRIPTION	LENGTH		WIDTH		M.W.L.		B.L.		WEIGHT	
		mm	(in.)	mm	(in.)	kg	(lb)	kg	(lb)	g	(oz)
Ball Bearing											
RC13034A	Genoa car, aluminium 75mm (3") RB sheave, single control sheave	215	(8 1/2)	77	(3 1/16)	2750	(6060)	5100	(11240)	1450	(51.1)
Sliderod											
RC53030	Genoa car, sliderods, plunger stop	160	(6 5/16)	55	(2 3/16)	1700	(3750)	3400	(7500)	848	(29.9)
RC53031	Genoa car, sliderods, internal control becket & becket return	140	(5 1/2)	55	(2 3/16)	1500	(3310)	3000	(6610)	805	(28.4)
Accessories											
RC53039	End stop sheet deflector	135	(5 5/16)	55	(2 3/16)	1400	(3090)	2800	(6170)	780	(27.5)
RF78000W	Sheave RB, aluminium, diameter 75mm (3"), suits RC53030, RC53031, RC53039	-	-	42	(1 11/16)	2400	(5290)	-	-	280	(9.9)



RC53002 




2 x M6 screw

RC53003 



RC53041 




RC53040 



RC00481	RC00484
RC00482	RC00485
RC00483	RC00486

FEATURES

- ▶ Sliderod cars with pivoting shackles suit a variety of applications where a secure, adjustable take-off point for a block or control line is required.
- ▶ Plunger stops can be locked in the "up" position.
- ▶ Outhaul car suitable for boats to 17m (56 ft) with conventional reefing or in-mast furling systems.

PRODUCT No.	DESCRIPTION	LENGTH		WIDTH		M.W.L.		B.L.		WEIGHT	
		mm	(in.)	mm	(in.)	kg	(lb)	kg	(lb)	g	(oz)
 Sliderod											
RC00481	Sliderods, suits RC13083 (pair)	53	(2 1/16)	8	(5/16)	-	-	-	-	8	(0.3)
RC00482	Sliderods, suits 50mm car (pair)	40	(1 9/16)	8	(5/16)	-	-	-	-	6	(0.2)
RC00483	Sliderods, suits 110mm car (pair)	98	(3 7/8)	8	(5/16)	-	-	-	-	16	(0.6)
RC00484	Sliderods, suits 140mm car (pair)	129	(5 1/16)	8	(5/16)	-	-	-	-	21	(0.7)
RC00485	Sliderods, suits 160mm car (pair)	149	(5 7/8)	8	(5/16)	-	-	-	-	24	(0.8)
RC00486	Sliderods, suits 170mm car (pair)	144	(5 11/16)	8	(5/16)	-	-	-	-	23	(0.8)
RC53002	Car, sliderods, pivoting shackle top	50	(2)	55	(2 3/16)	750	(1650)	2650	(5840)	136	(4.8)
RC53003	Car, sliderods, pivoting shackle top, internal control becketts	110	(4 5/16)	55	(2 3/16)	1325	(2920)	2650	(5840)	310	(10.9)
RC53040	Car, sliderods, pivoting shackle top & plunger stop	110	(4 5/16)	55	(2 3/16)	1325	(2920)	2650	(5840)	355	(12.5)
RC53041	Outhaul car, sliderods, 10mm (13/32") pin, internal control becketts	140	(5 1/2)	55	(2 3/16)	1880	(4140)	3760	(8290)	560	(19.8)


FEATURES

- ▶ Ball bearing spinnaker pole cars for boats to 15m (50 ft) suit a variety of inboard end fittings.

MATERIALS

- ▶ Alloy track, car bodies and end caps.
- ▶ Torlon® ball bearings.
- ▶ Grade 316 stainless steel fixtures.

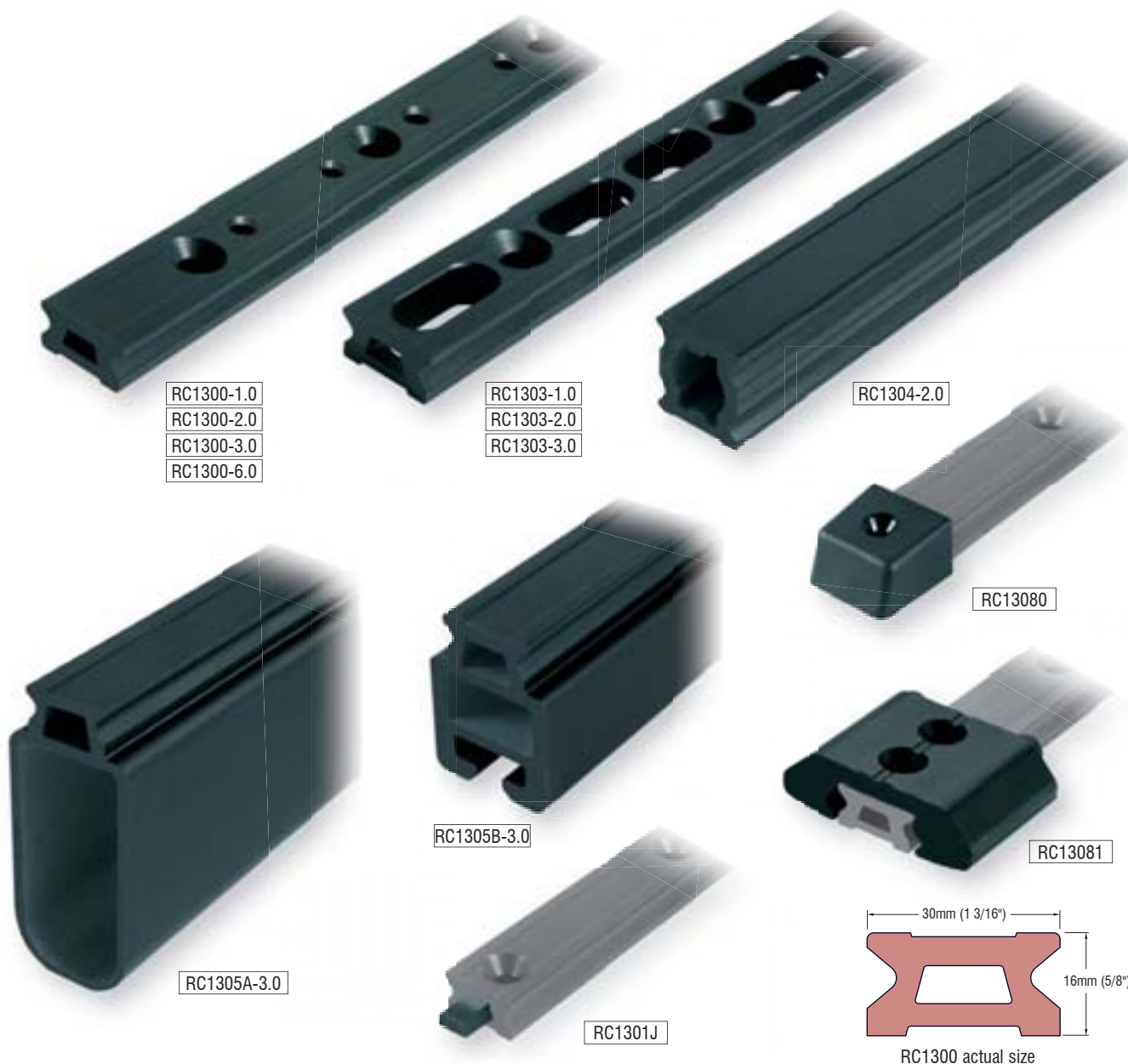
PRODUCT No.	DESCRIPTION	LENGTH		WIDTH		M.W.L.		B.L.		WEIGHT	
		mm	(in.)	mm	(in.)	kg	(lb)	kg	(lb)	g	(oz)
Ball Bearing											
RC13044	Spinnaker pole car, suits toggle	175	(6 7/8)	77	(3 1/16)	1800	(3970)	3600	(7940)	720	(25.4)
RC13045	Spinnaker pole car, suits toggle	185	(7 5/16)	77	(3 1/16)	1900	(4190)	3800	(8380)	860	(30.3)
RC13046	Spinnaker pole car, suits toggle	175	(6 7/8)	77	(3 1/16)	1800	(3970)	3600	(7940)	695	(24.5)



FEATURES

- ▶ Traveller control ends have high performance Torton® ball bearing sheaves, and are suited for mainsheet systems on boats to 17m (56 ft).
- ▶ Control line sheaves are 50mm (2") diameter and suit up to 8mm (5/16") rope.
- ▶ Cleat supports can be adjusted to the optimum cleating angle.
- ▶ Control ends can also be used to create purchase systems for genoa lead adjustment under load.
- ▶ Adjustable stops can be fitted on track aft of genoa cars and used to relieve load on adjustment tackle.

PRODUCT No.	DESCRIPTION	LENGTH		WIDTH		M.W.L.		B.L.		WEIGHT	
		mm	(in.)	mm	(in.)	kg	(lb)	kg	(lb)	g	(oz)
RC13083	Adjustable stop	77	(3)	55	(2 3/16)	-	-	-	-	190	(6.7)
RC13084	Control end, single sheave	95	(3 3/4)	55	(2 3/16)	450	(990)	1350	(2980)	250	(8.8)
RC13084C	Control end, single sheave, cleat	95	(3 3/4)	55	(2 3/16)	270	(600)	1350	(2980)	465	(16.4)
RC13085	Control end, single sheave & becket	115	(4 1/2)	55	(2 3/16)	675	(1490)	1350	(2980)	315	(11.1)
RC13085C	Control end, single sheave & becket, cleat	115	(4 1/2)	55	(2 3/16)	450	(990)	1350	(2980)	555	(19.6)
RC13086	Control end, double sheave	95	(3 3/4)	55	(2 3/16)	675	(1490)	1350	(2980)	315	(11.1)
RC13086C	Control end, double sheave, cleat	95	(3 3/4)	55	(2 3/16)	630	(1390)	1350	(2980)	525	(18.5)
RC13087	Control end, double sheave & becket	115	(4 1/2)	55	(2 3/16)	675	(1490)	1350	(2980)	580	(20.5)
RC13087C	Control end, double sheave & becket, cleat	115	(4 1/2)	55	(2 3/16)	675	(1490)	1350	(2980)	625	(22.0)


FEATURES

- ▶ Light weight track has milled slots between mounting holes, achieving significant weight reduction.
- ▶ Standard low profile track has stop holes for cars fitted with plunger stops.

- ▶ High profile and beam track can be used for unsupported spans to bridge cockpits and companionway hatches.

APPLICATIONS

- ▶ Mainsheet and genoa sheet systems on boats to 17m (56 ft).

▶ **TRACK FASTENINGS** – 8mm (5/16") countersunk fasteners at 100mm (3 15/16") centres

▶ **STOP HOLES** – 50mm (1 31/32") centres

PRODUCT No.	DESCRIPTION	LENGTH		WIDTH		WEIGHT	
		mm	(in.)	mm	(in.)	g	(oz)
RC1300-1.0*	Track, black	996	(39 1/4)	30	(1 3/16)	810	(28.6)
RC1300-2.0*	Track, black	1996	(78 5/8)	30	(1 3/16)	1620	(57.1)
RC1300-3.0*	Track, black	2996	(118)	30	(1 3/16)	2430	(85.7)
RC1300-6.0*	Track, black	5996	(236 1/4)	30	(1 3/16)	4860	(171.4)
RC1301J	Track joiner	60	(2 3/8)	-	-	7	(0.2)
RC1303-1.0	Light weight track, black	996	(39 1/4)	30	(1 3/16)	656	(23.1)
RC1303-2.0	Light weight track, black	1996	(78 5/8)	30	(1 3/16)	1311	(46.2)
RC1303-3.0	Light weight track, black	2996	(118)	30	(1 3/16)	1967	(69.4)
RC1304-2.0	High profile track, black	1996	(78 5/8)	30	(1 3/16)	2520	(88.9)
RC1305A-3.0	Beam track, black	2996	(118)	45	(1 3/4)	8550	(301.6)
RC1305B-3.0	Beam track, black	2996	(118)	42	(1 5/8)	8490	(299.4)
RC13080	End cap, plastic	37	(1 7/16)	37	(1 7/16)	27	(1.0)
RC13081	End stop, aluminium	65	(2 1/2)	76	(3)	150	(5.3)

* Silver track available - Order as RCxxxxxS